



Erasmus+

Published by NAVICULA.M 2020

Copyright © NAVICULA.M

AUTHORS

Anna Gyosheva,
Marusya Dardova,
Viyra Topuzova
Igor Mertyn,
Anita Mertyn,
Ludek Richter,
Angelika Funk,

Maria José Fernández González-Conejero,

Maria Dolores Mogío Victoria,

Ana Maria Soler Gómez,

Camilla Alessandrelli,

Silvia Giovanella

ILLUSTRATIONS AND DESIGN

Marta Bilińska

ISBN 978-83-959221-0-7

All rights reserved. No parts of this publication may be reproduced, stored in a retrieval system, or transmitted, in any form or by any means, electronic, mechanical, photocopying, recording or otherwise, without the prior written permission of the authors.



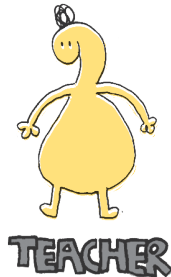
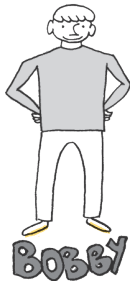
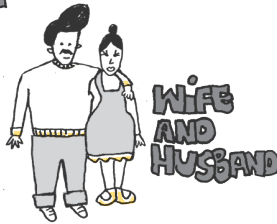
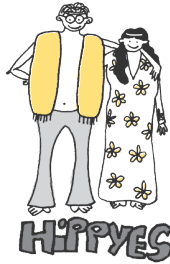
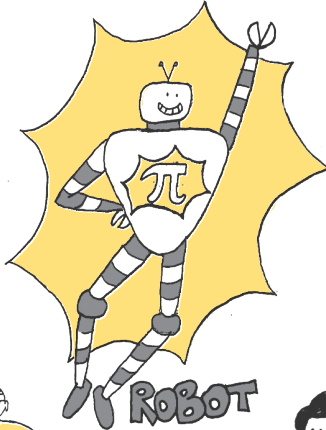
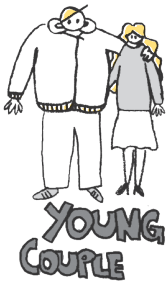
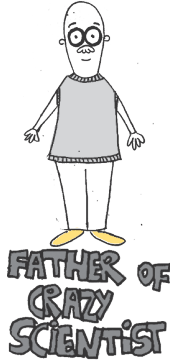


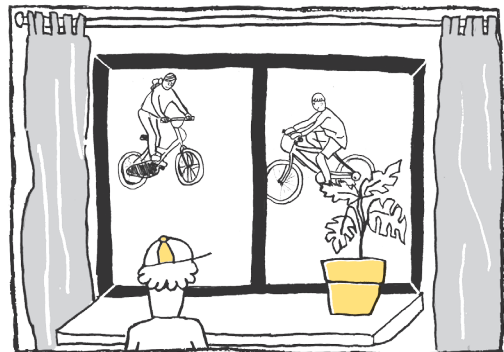
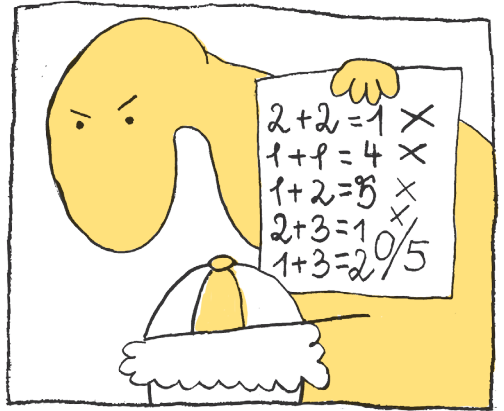
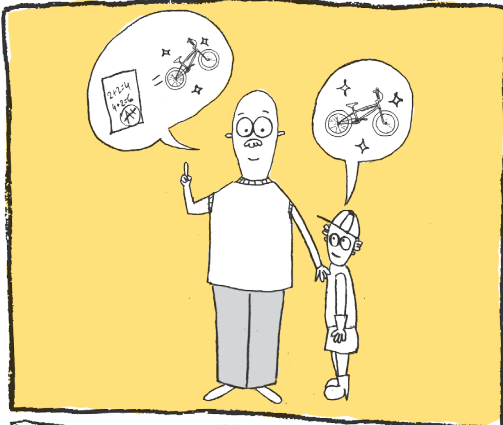
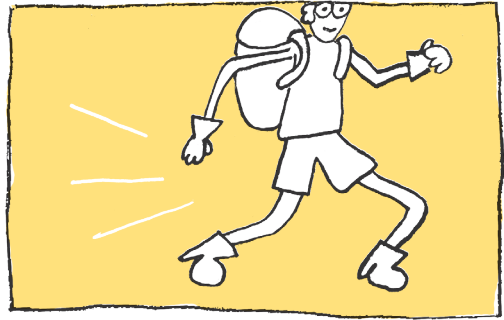
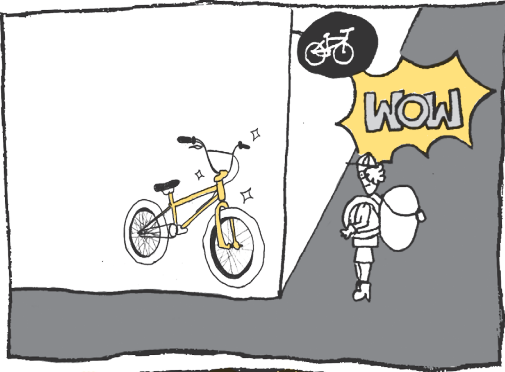
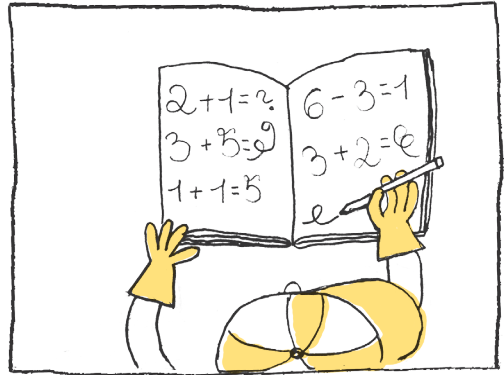
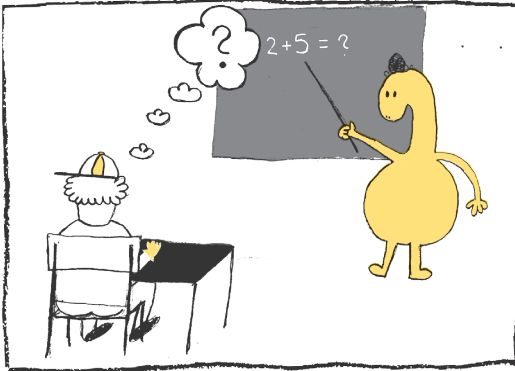
MATH

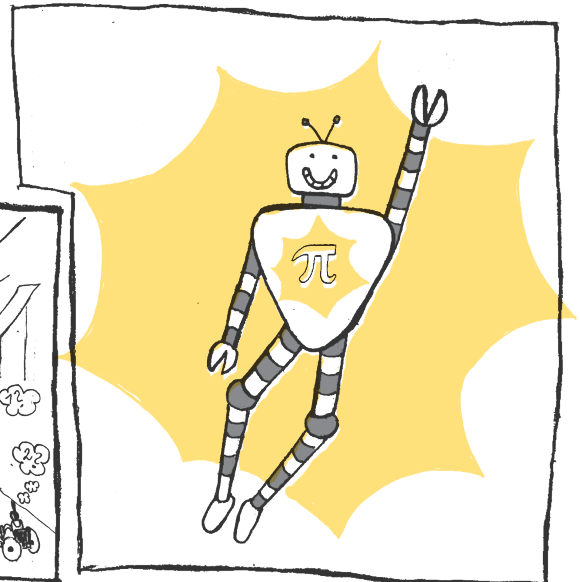
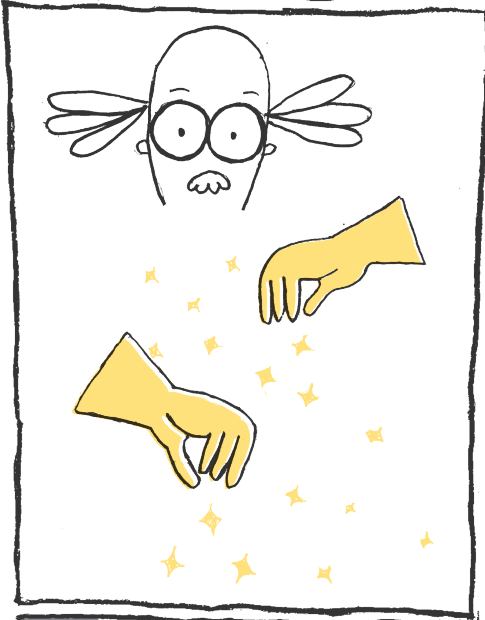
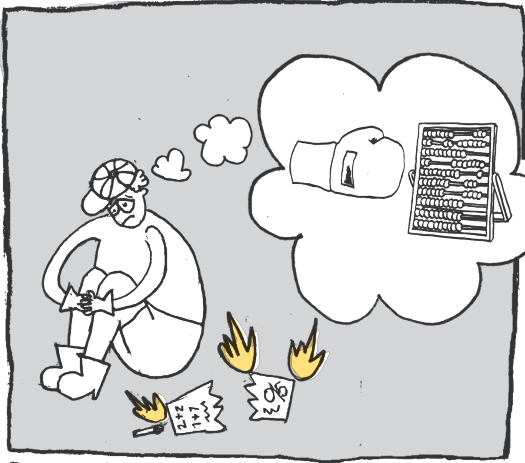
COMIC
MATH FOR ADULTS

CHARACTERS

P R O L O G U E

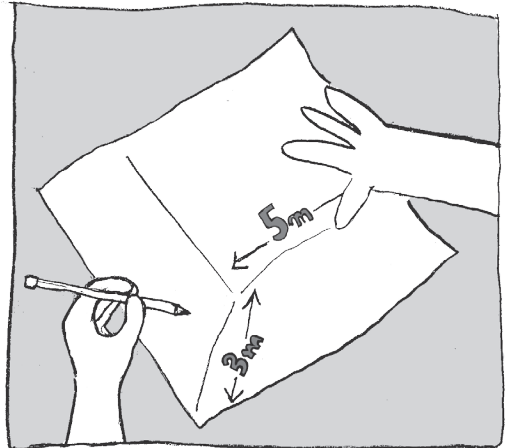
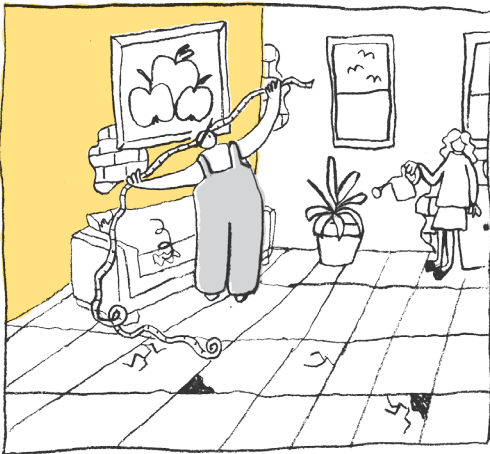
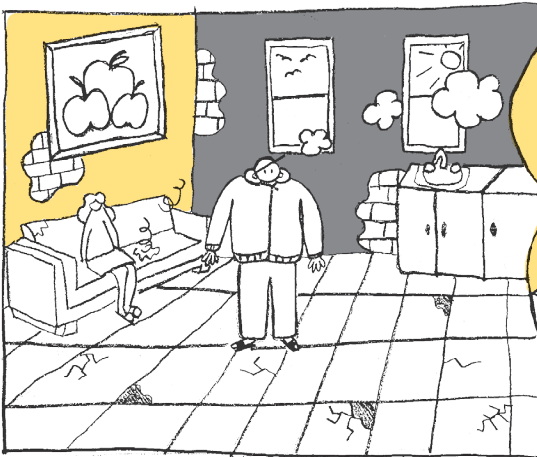
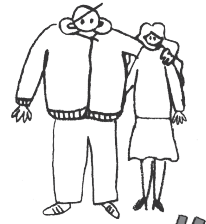


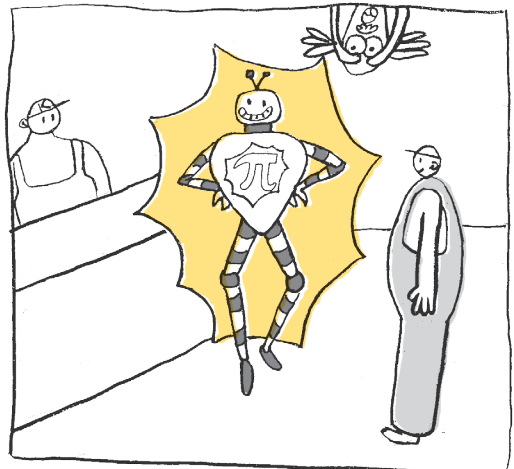
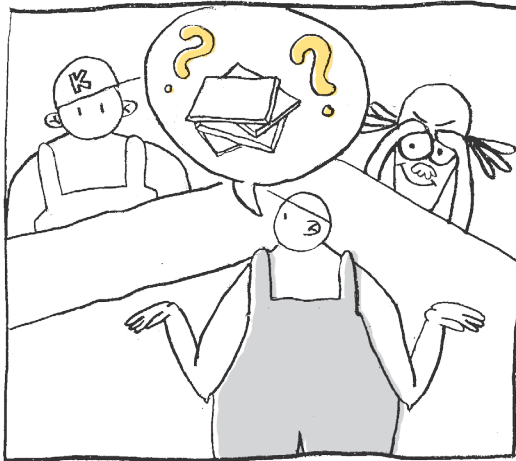
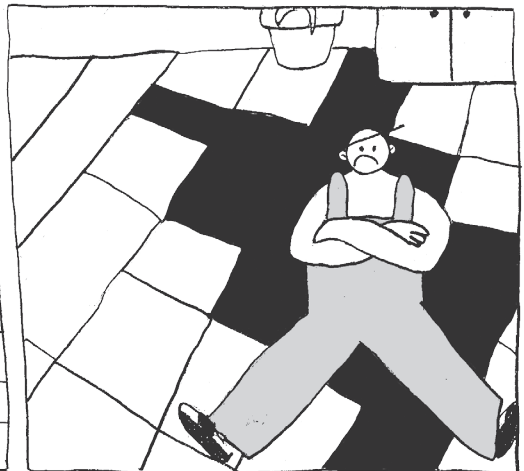
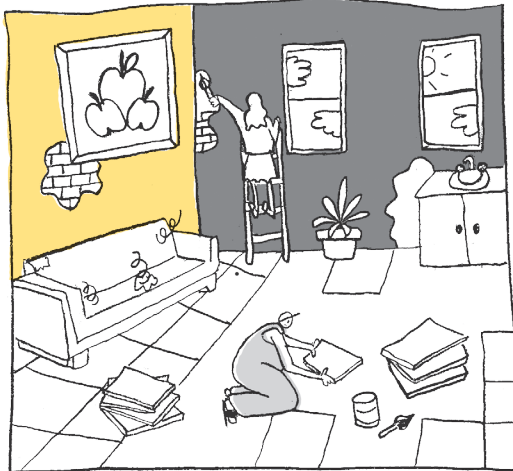
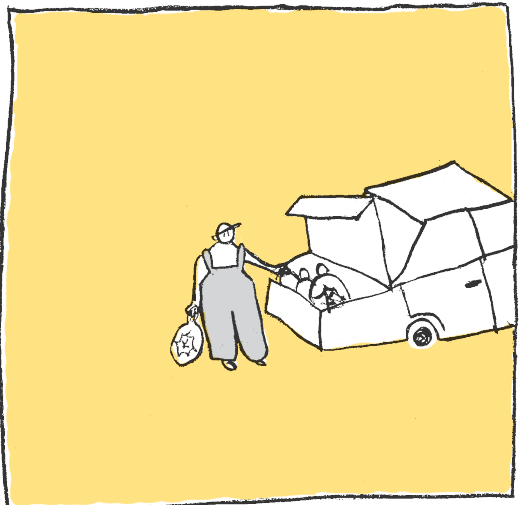
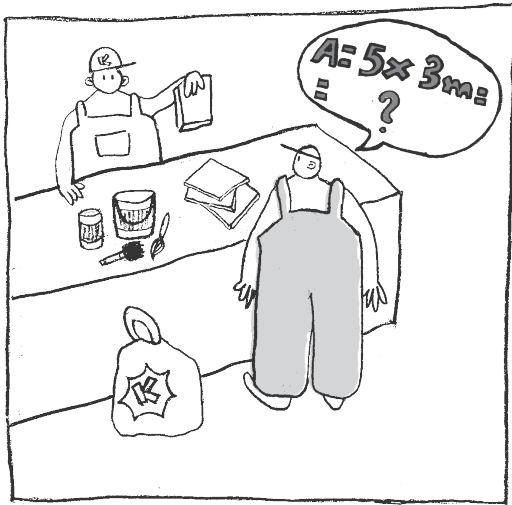


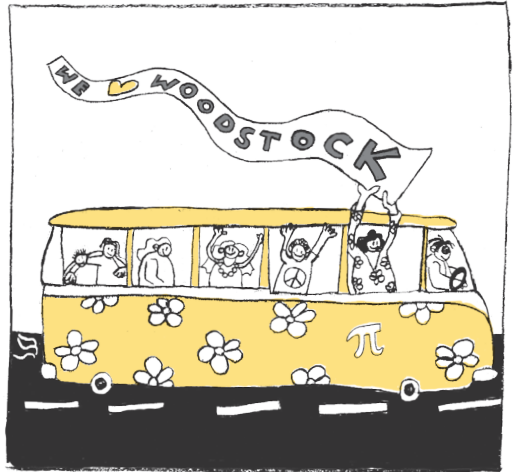
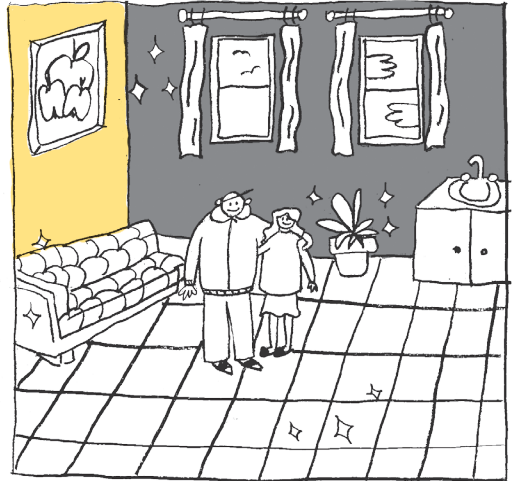
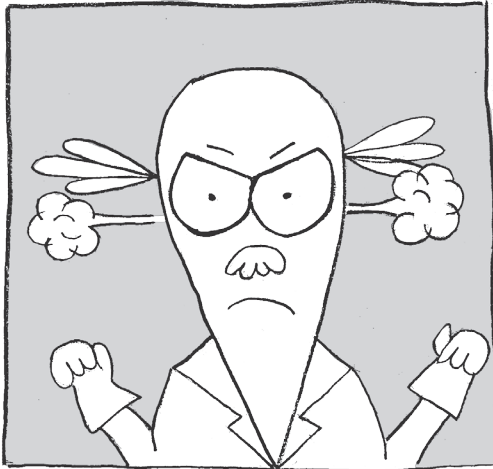
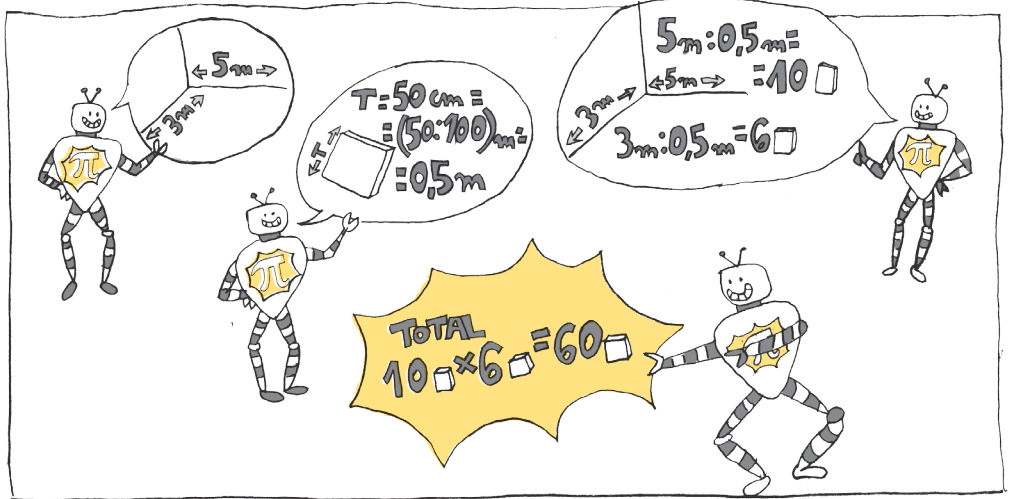


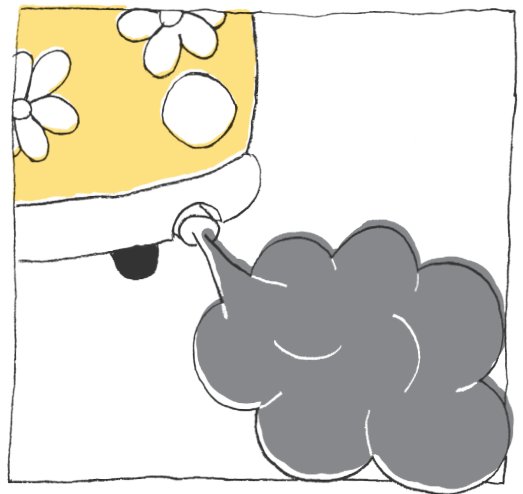
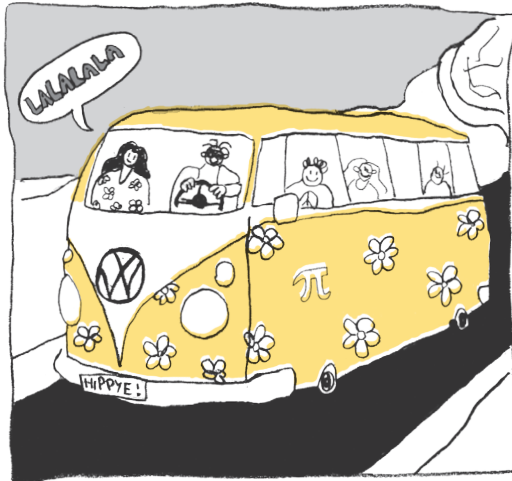
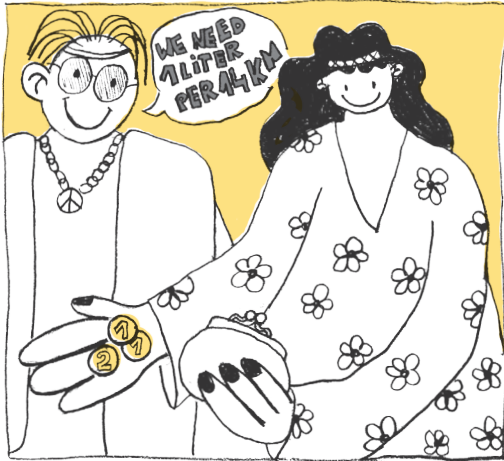
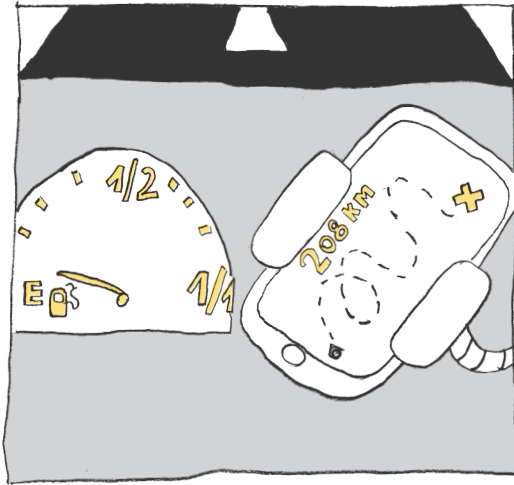
1

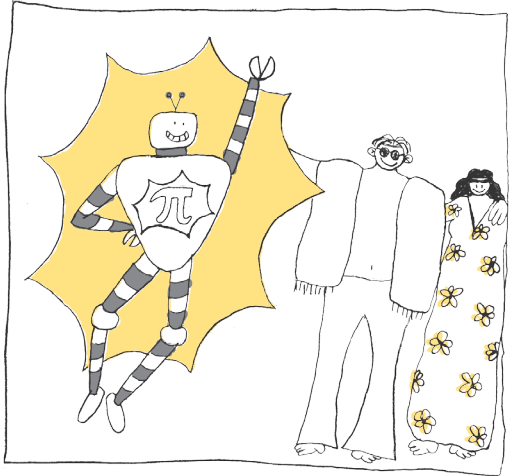
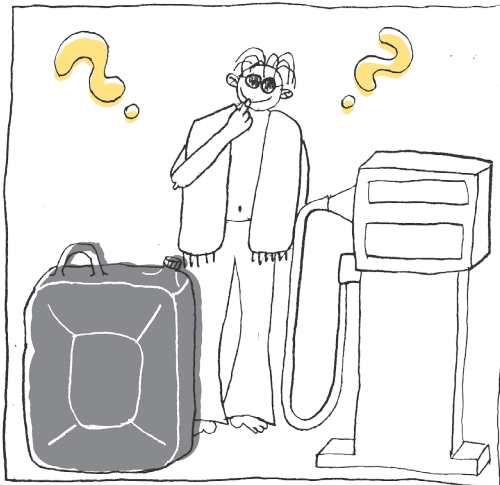
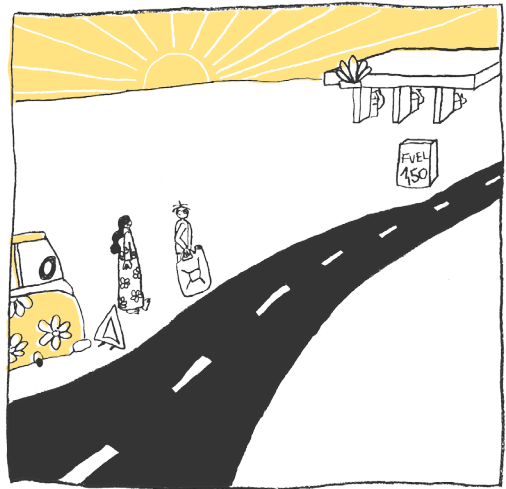
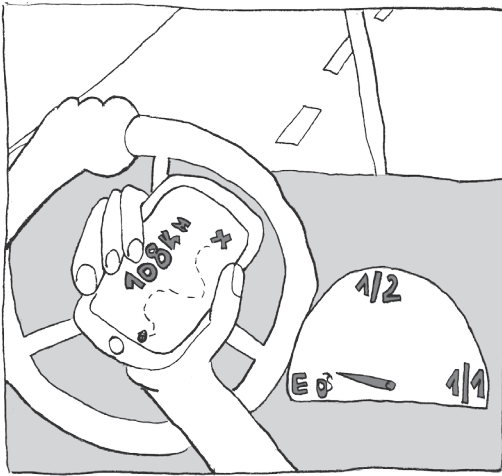
CHAPTER "FLAT RENOVATION"







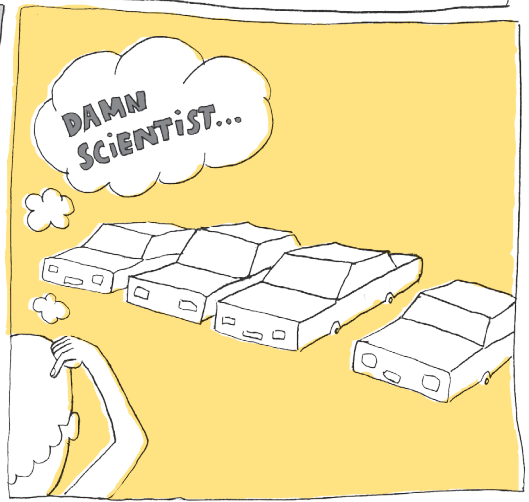
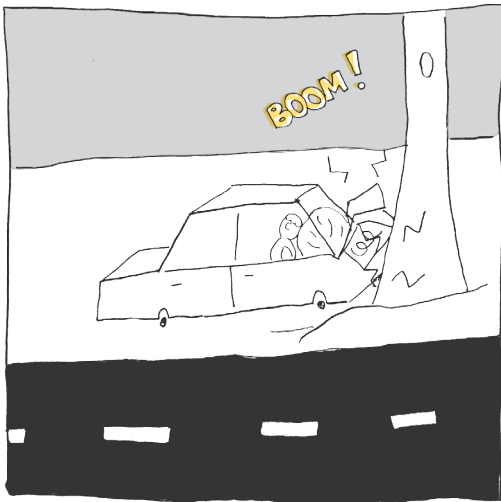
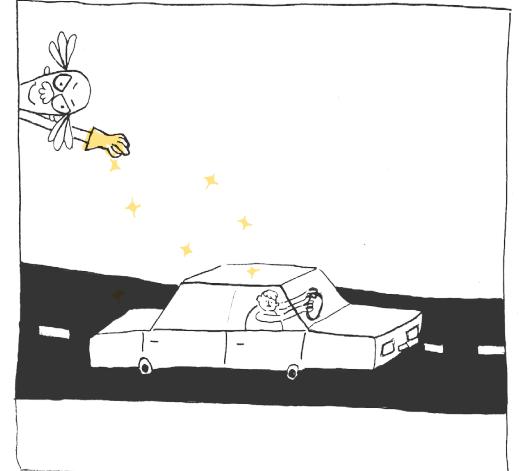
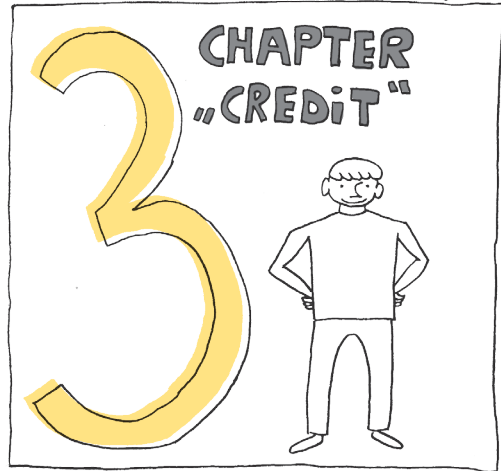
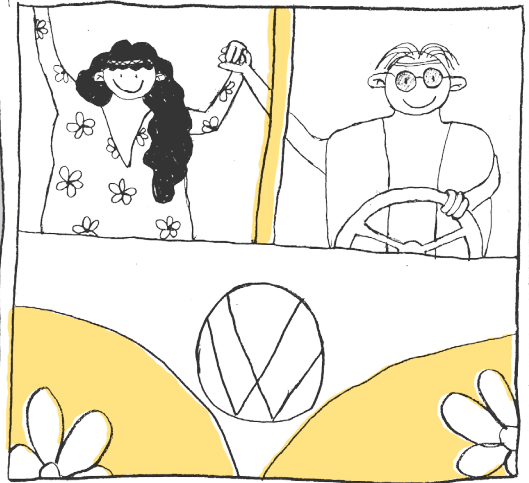
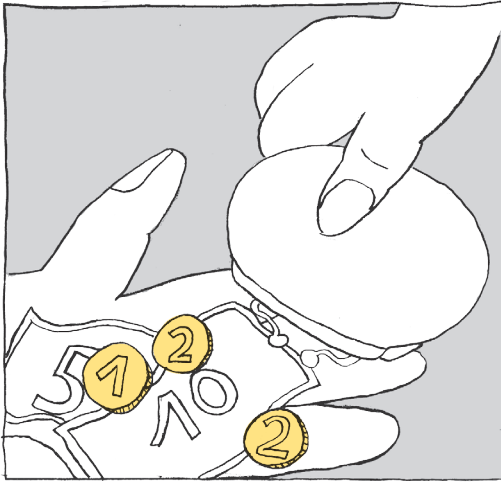




108 KM STILL TO RUN

1 LITER FOR 14 KM →
→ 108 KM : 14 KM = 7,7 L →
8 L OF FUEL YOU NEED!

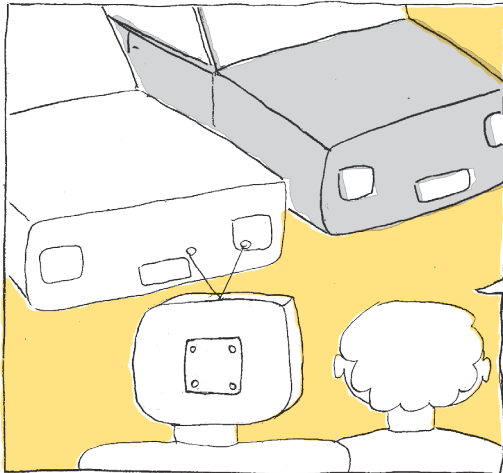
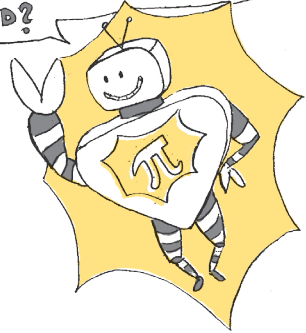
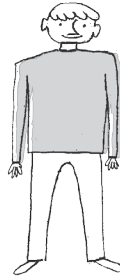
COST OF 1L → 1,50€ is
8L × 1,50€
= 12€



HOW COULD J UNDERSTAND
WHICH IS THE BEST CHOICE?

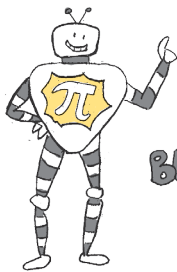


J'M HERE FOR SOLVING ALL YOUR
PROBLEMS MY FRIEND! WHAT DO YOU
NEED?



J LIKE THAT ONE RED,
J SHOULD PAY JUST 130€
PER MONTHS FOR 5 YEARS
AND THAT BLUE IS
AMAZING, THE OFFER
SAYS 530€ PER MONTHS
FOR JUST ONE YEAR!
WHICH IS THE CHEAPER
OPTIONS FOR ME?

J SHOW YOU!



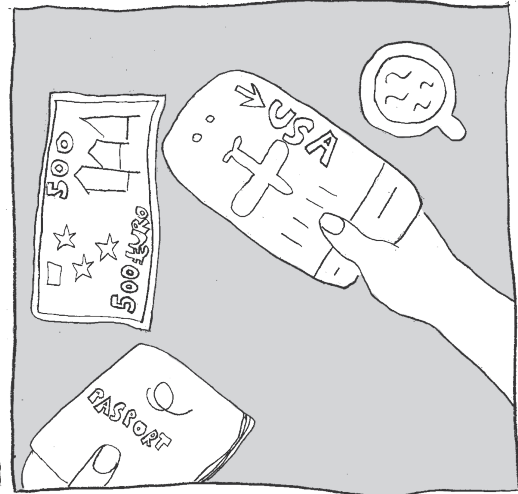
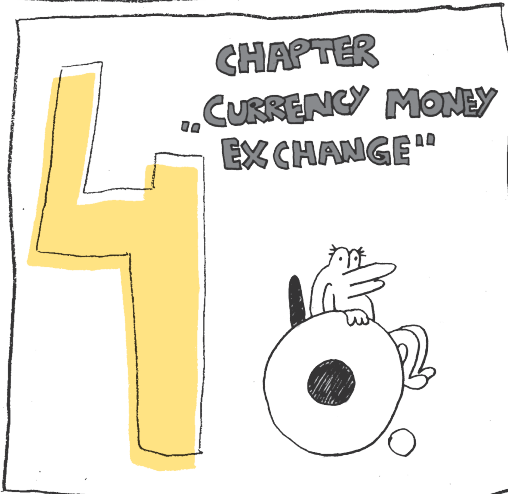
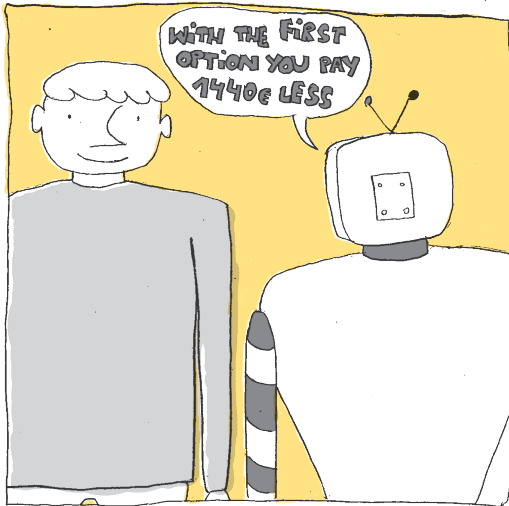
RED  1 YEAR = 12 MONTHS \Rightarrow

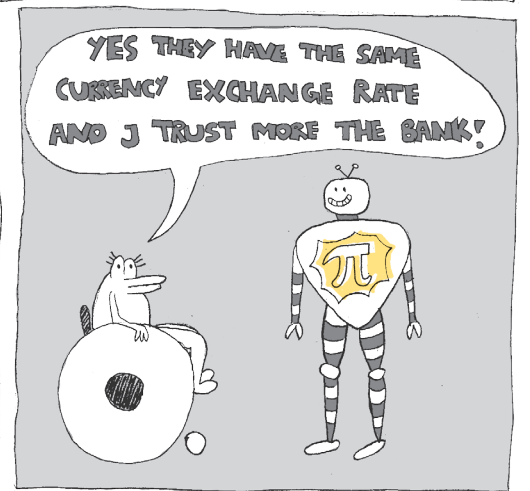
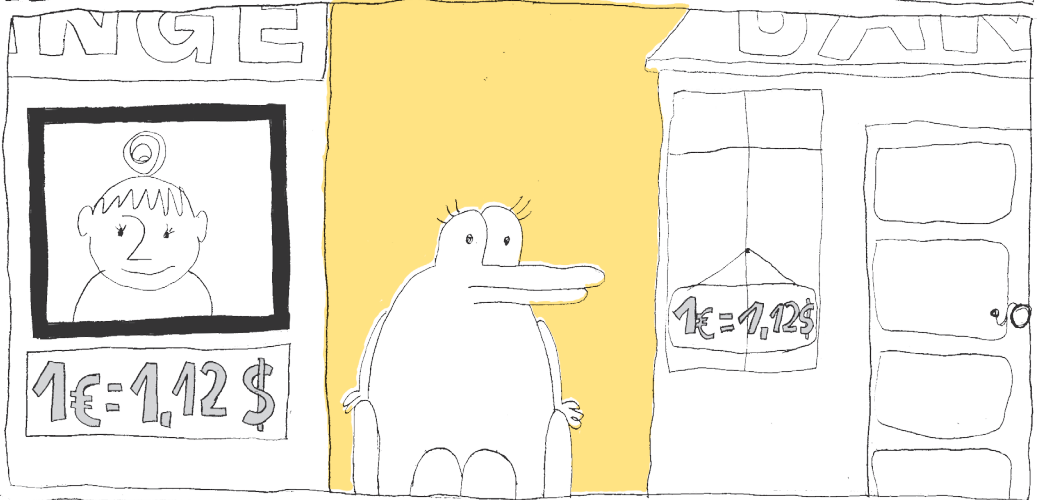
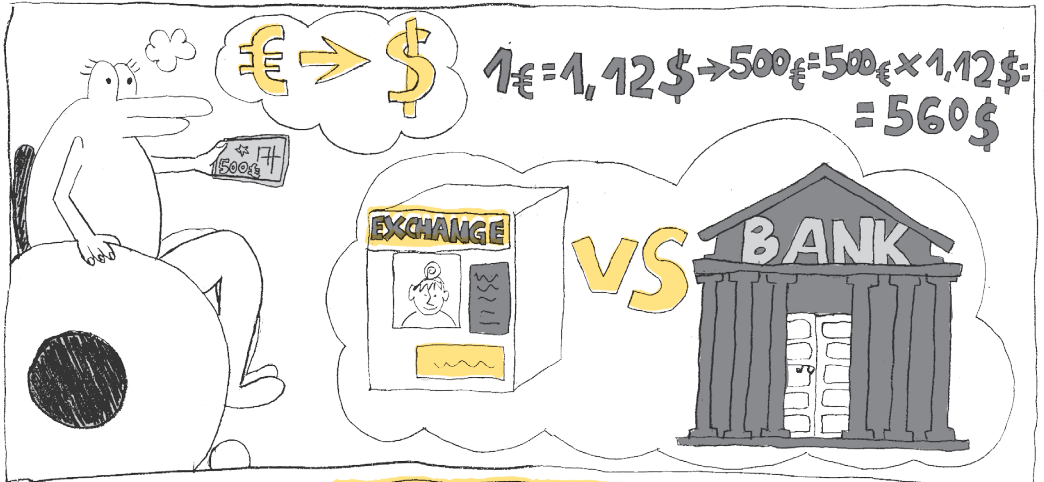
$\Rightarrow 530€ \times 12 \text{ MONTHS} = 6360€$

BLUE  5 YEARS = $5 \times 12 \text{ MONTHS} = 60 \text{ MONTHS}$ \Rightarrow

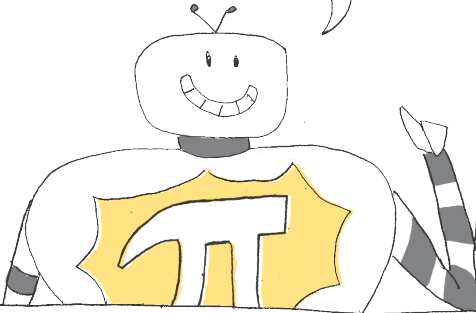
$\Rightarrow 130€ \times 60 \text{ MONTHS} = 7800€$

DIFFERENCE: **$7800€ - 6360€ = 1440€$**



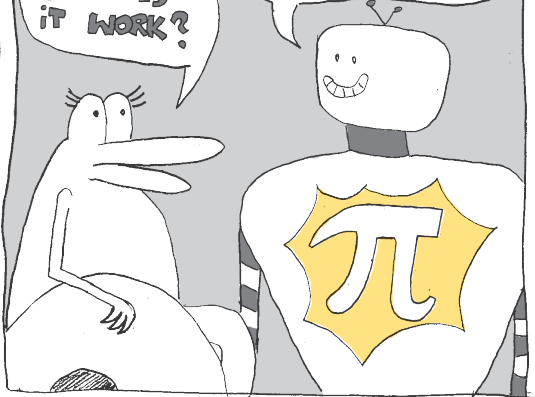


THIS IS TRUE, BUT YOU SHOULD KNOW THAT YOU WILL PAY AN ADDITIONAL COST OF 2% TO THE BANK!



REALLY? HOW DOES IT WORK?

I SHOW YOU!



PERCENTAGE CALCULATION (ADDITIONAL COST)



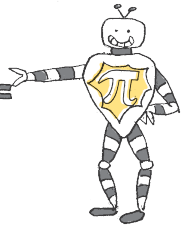
$$560 \$: 100 = 5,60 \$ \times 2 = 11,20 \$$$



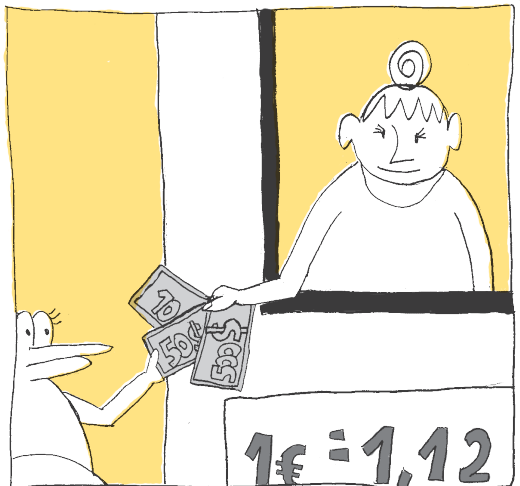
$$\rightarrow 500 \text{ €} \times 1,12 \$ = 560 \$$$

$$\rightarrow 500 \text{ €} \times 1,12 \$ = 560 \$ - 11,20 \$ =$$

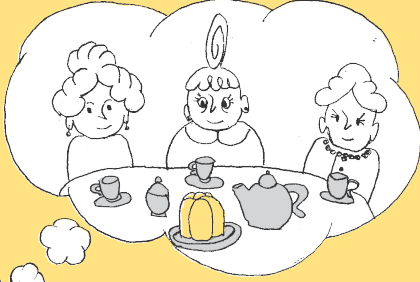
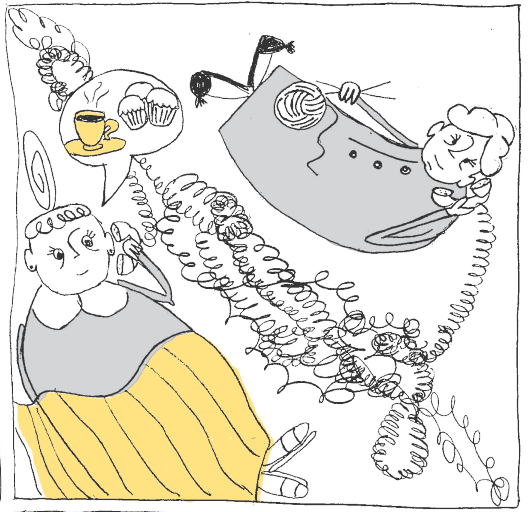
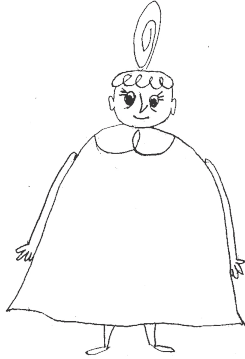
$$= 548,80 \$$$

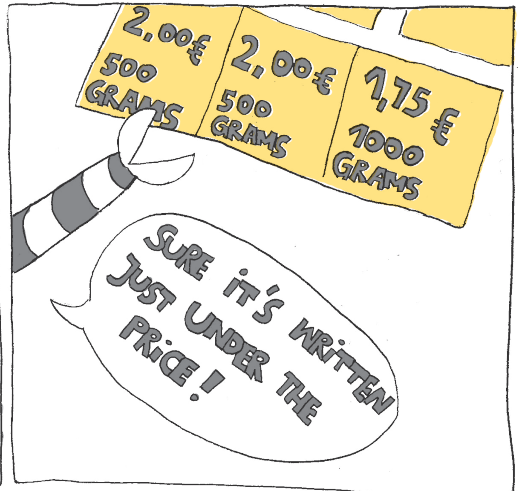


WOW!
I WILL GO TO THE EXCHANGE THANKS π-ROBOT!



5 CHAPTER "SHOPPING"





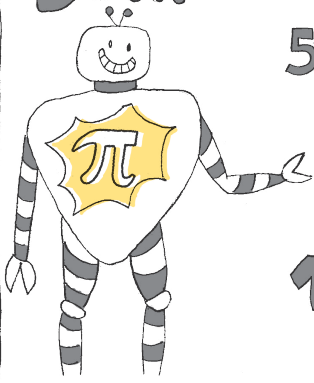
SO... OPTION PAY 1 TAKE 2 →

500 GRAMS \times 2 = 1000 GRAMS →

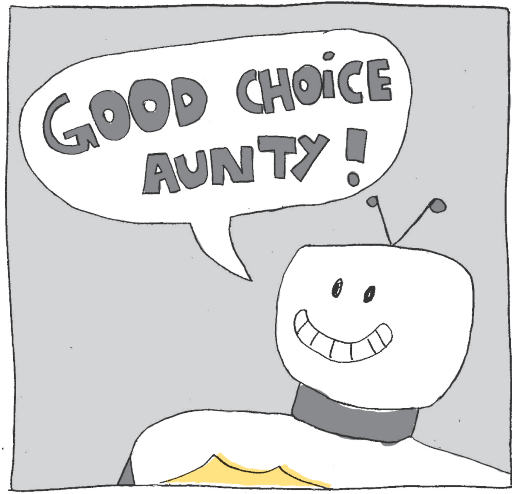
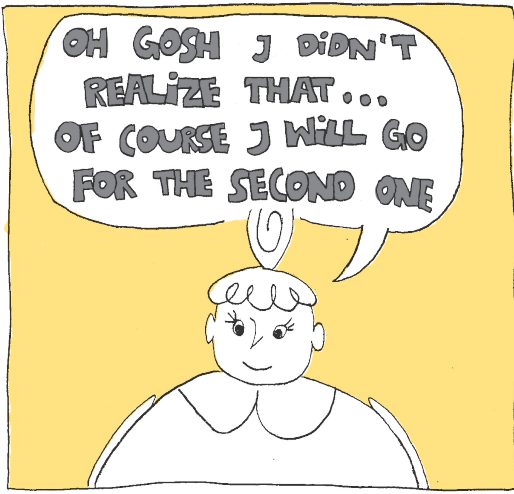
→ FOR 2 €

AND SECOND OPTION


1000 GRAMS FOR 1,75 €



The robot from the first panel is pointing towards the text.



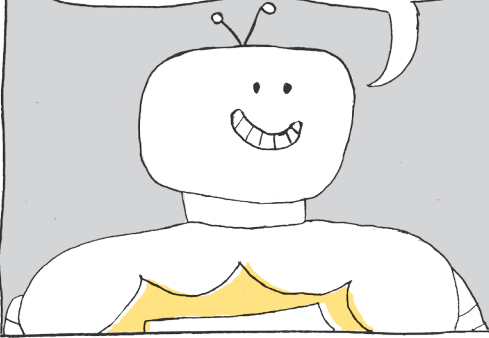
6 CHAPTER "COOKING"

A simple line drawing of a man with glasses and a young girl with braids, holding hands. The man is wearing a long-sleeved shirt and pants, while the girl is wearing a dress.

J'M TRYING TO MAKE SOME PANCAKES AND J DON'T KNOW HOW TO CALCULATE THE QUANTITY OF THE PRODUCTS. IN THE RECIPE, THERE IS $\frac{3}{4}$ OF FLOUR (250G). AND J DON'T KNOW HOW TO DO THIS.



IT'S EASY, YOU KNOW THAT ALL THE PACK IS 500 G OF FLOUR, RIGHT? SO, LOOK AT ME!

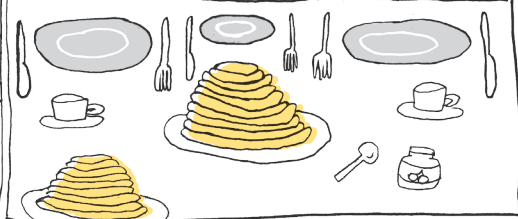
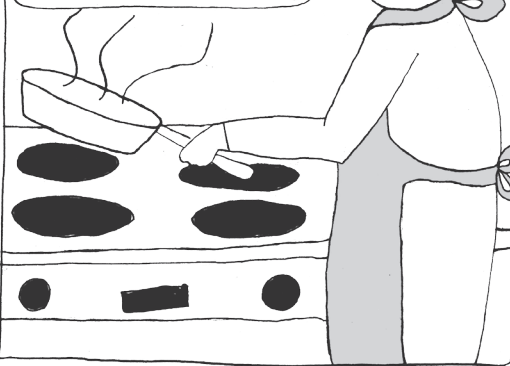


 = 500G  = 250G →

→ LET'S TAKE 250G FLOUR FROM THE PACK YOU NEED $\frac{3}{4}$ OF 250G → $250G : 4 = 62,5G$ THEN $62G \times 3 = 187,5G$



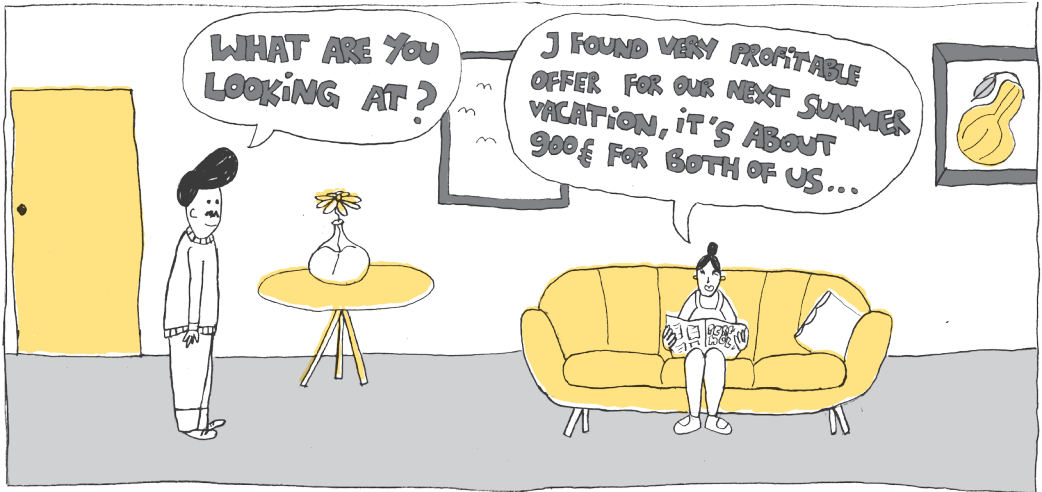
OK, THIS LOOKS LIKE PIECE OF CAKE. DO YOU WANT TO JOIN ME?



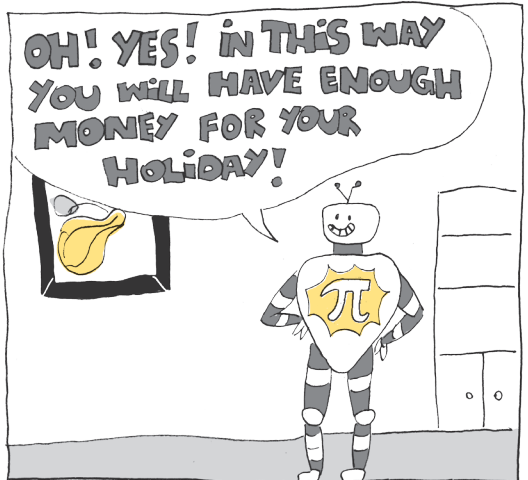
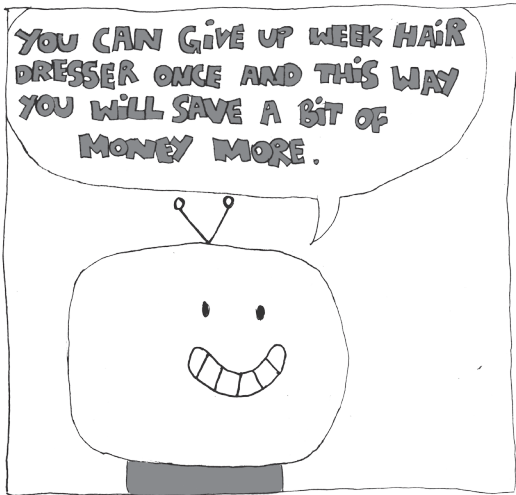
7

CHAPTER "HOME BUDGET"





<p>SALARY 1 = 1320</p> <p>SALARY 2 = 1270</p> <p>RENT = 420 BILLS = 250</p> <p>CREDIT = 1000</p> <p>HAIR DRESSER = 55</p> <p>FRIENDS EVENING = 48</p>	<p>INCOME 1320 + 1270 =</p> <p> = 2590</p> <p>OUTCOME 420 + 250 + 1000 +</p> <p> + 55 + 48 = 1773</p> <p>SAVED MONEY:</p> <p>2590 - 1773 =</p> <p> = 817 €</p>
--	---





$$\text{INCOME: } 1320_{\text{€}} + 1270_{\text{€}} = 2590_{\text{€}}$$

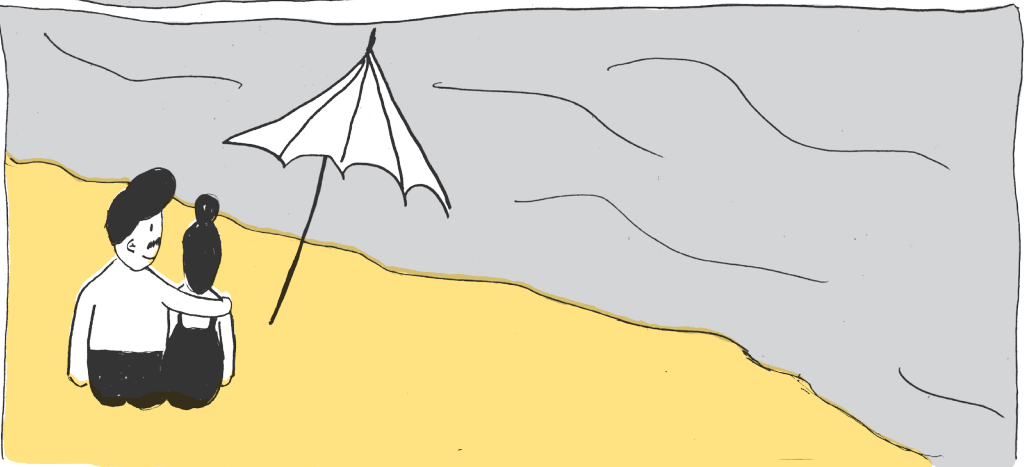
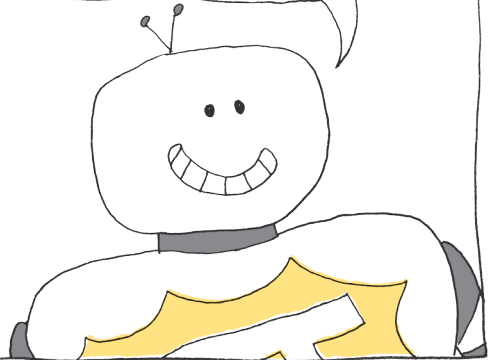
$$\text{OUTCOME WITHOUT HAIR DRESSER AND FRIENDS' EVENING: } 420 + 250 + 1000 = 1670$$

$$\text{SAVED MONEY: } 2590 - 1670 = 920$$

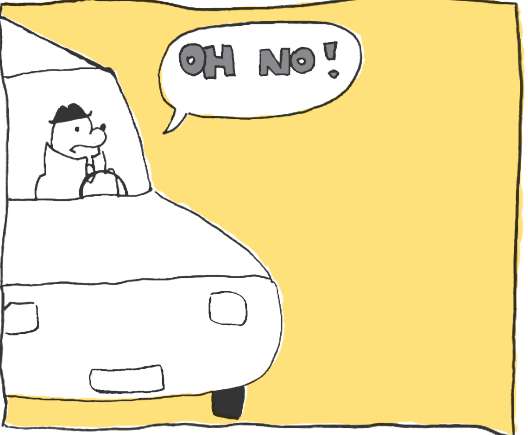
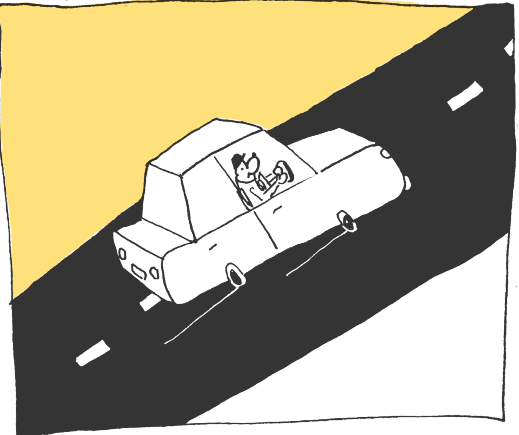
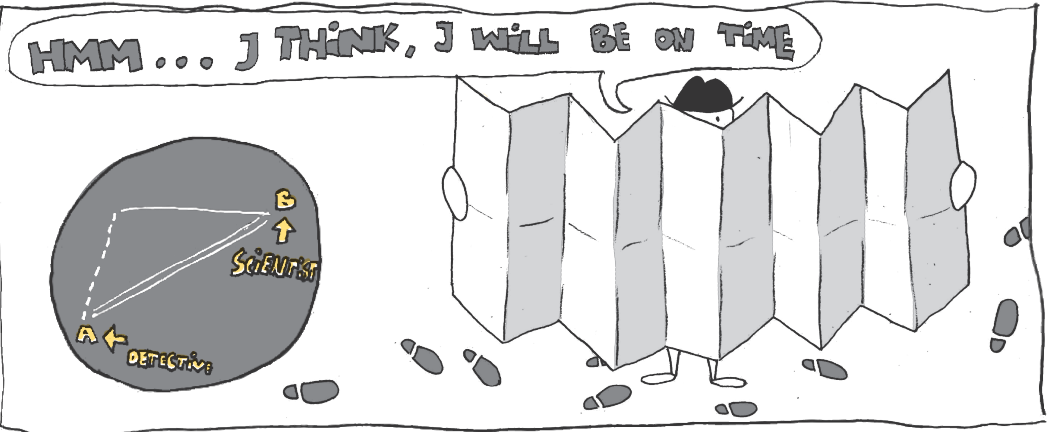
OK! WE HAVE A DEAL AND IT WOULD BE ENOUGH!

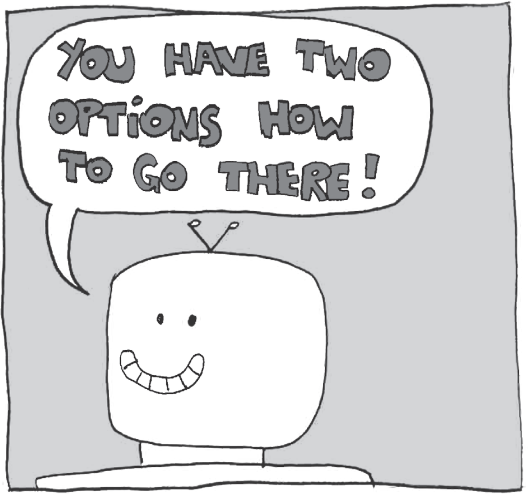
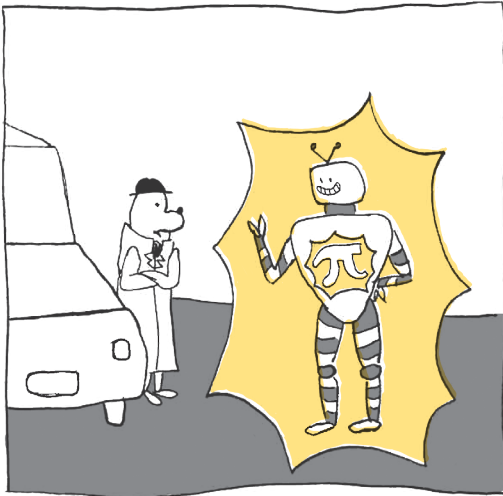


YOU WILL HAVE 20\$ EXTRA!



EPILOGUE






TO GO FROM POINT A TO B
YOU HAVE TWO OPTIONS

1. ROUTE + ROUTE 3 KM + 4 KM = 7 KM

2. ROUTE = $\sqrt{\text{ROUTE}^2 + \text{ROUTE}^2} =$
 $= \sqrt{3^2 + 4^2} = \sqrt{9 + 16} = \sqrt{25} = 5 \text{ km}$



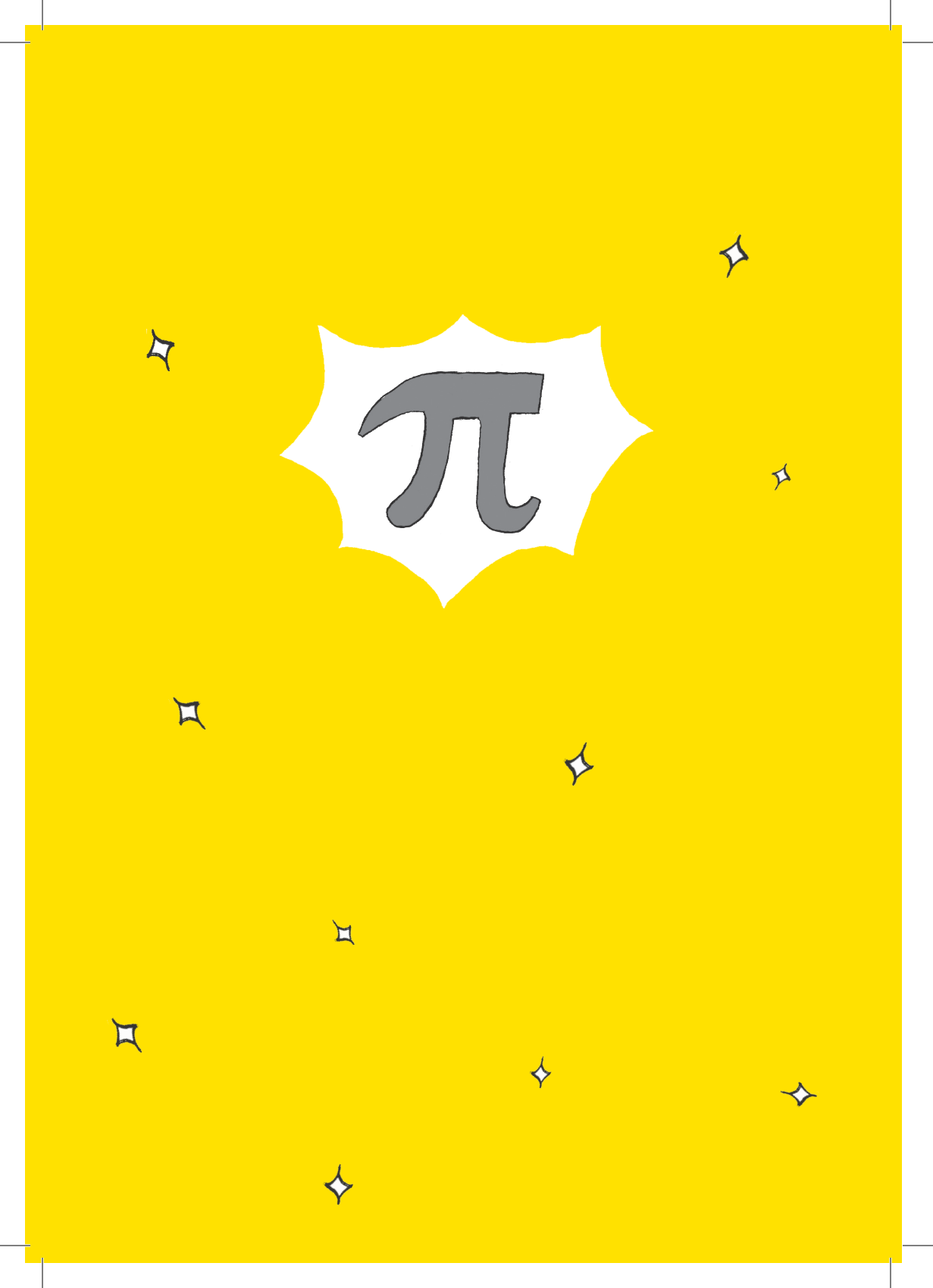
A diagram shows a right-angled triangle with a vertical side of 3 km, a horizontal side of 4 km, and a hypotenuse connecting point A to point B. A dashed line indicates the 3 km vertical distance.





Co-funded by the Erasmus+ Programme of the European Union

The European Commission support for the production of this publication does not constitute an endorsement of the contents, which reflects the views only of the authors, and the Commission cannot be held responsible for any use which may be made of the information contained therein.

A stylized pi symbol (π) is centered within a white, shield-like shape with a scalloped border. The background is a solid, bright yellow color, scattered with several small, white, four-pointed starburst symbols. The pi symbol is rendered in a bold, grey, sans-serif font.

π